



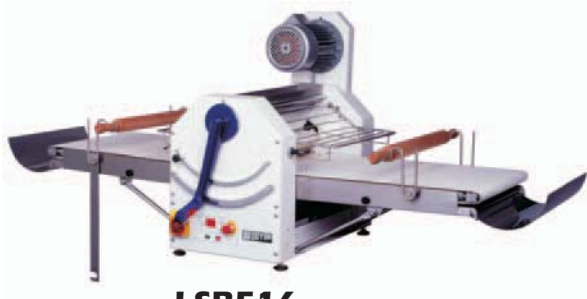
Pizzaovens.com

1.877.FOR.OVEN
367.6836

Since 1999

LSB516 & LMF624

“Superior *quality* product
at an *affordable* price !”



LSB516



LMF624



Reversible sheeters FEATURING

- Exceptional fold free reversible sheeting action
- 19 1/2” (49.5 cm) and 23 1/2” (59.7 cm) sheeting rollers
- Unique 20 digital variable speed control for the speed you really want
- Handy adjustable roller gap : up to 1 1/2” (3.8 cm) thick
- LMF624: capacity of up to 22 pounds (10 kg) of dough
- LSB516: capacity of up to 11 pounds (5 kg) of dough
- Forward reverse action is controlled by foot switch (LMF624) as well as hand controls
- Polyurethane belt
- 3/4 HP motor with V belt transmission
- Stainless steel protective guard on each side of rollers
- Fold-up conveyors for compact storage and easy cleaning
- Stainless steel rollers help prevent sticking
- Fast roller adjustments
- Both tables have perfectly synchronized drives. The exit conveyor is faster than entry to avoid possible dough obstruction and automatically prevents tearing of delicate dough
- 2 catch pans, one on each end
- High resistance lead-free enamel coating
- Easily removable and replaceable high efficiency dough scrapers
- Virtually maintenance free, extremely durable
- Flour reservoir above rollers
- CE & ETL listed
- One year parts and labor limited warranty

Reversible sheeters

Doyon reversible dough sheeters are designed for hotels, restaurants, pastry shops and small to high production bakeries. These sheeters are suitable for sheeting and stretching any kind of dough: yeast, croissants, puffed pastries, danish, flaky pastries, savory dough, soft pastry dough as well as stiff pizza or other kinds of dough to the required thickness. These sheeters are designed to ensure the highest degree of performance and efficiency you expect from Doyon.

DIMENSIONS

LSB516	81 1/2"W X 33 5/8"D X 32"H	
	(2070 mm X 854 mm X 813 mm)	
LMF624	108 3/4"W X 37 5/8"D X 42 1/2"H	
	(2760 mm X 958 mm X 1080 mm)	

CONVEYOR DIMENSIONS

LSB516	19"W X 64 3/4"L	
	(483 mm X 1645 mm)	
LMF624	23"W X 96 1/2"L	
	(584 mm X 2450 mm)	

ELECTRICAL SYSTEM

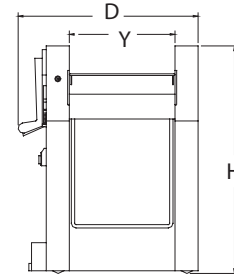
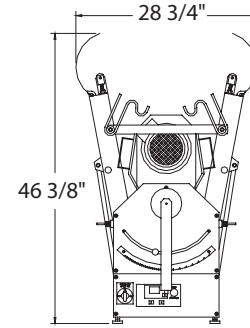
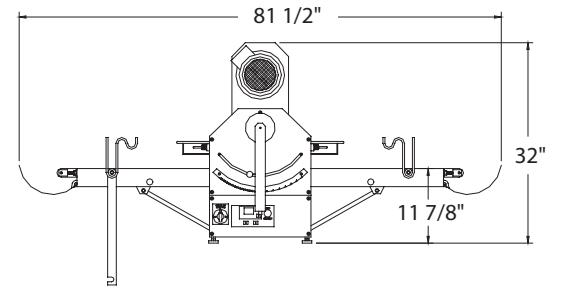
LSB516 :	120V 4A 1PH NEMA 5-15P
LMF624 :	120V 4A 1PH NEMA 5-15P

SHIPPING WEIGHT

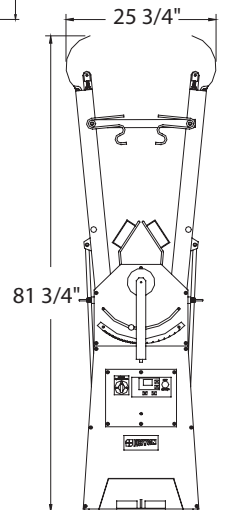
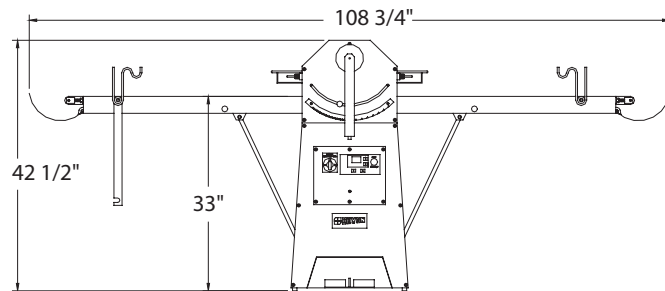
LSB516	525 lb (238 kg) approximately
LMF624	745 lb (295 kg) approximately

Specifications and design subject to change without notice.

LSB516




LMF624



Your local distributor: / Votre distributeur:





Pizzaovens.com

1.877.FOR.OVEN
367.6836

Since 1999