



# MODEL 130-PAGW

## GAS FIRED & GAS/WOOD COMBINATION OVEN

The Model 130-PAGW gas/wood combination oven contains all the same high quality features and components as the Model 130-PA wood fire oven. In addition to the Model 130-PA the Model 130-PAGW has three models of operation: Gas fired, Gas and Wood combination and Wood fired.

Our heavy-duty gas burner system is engineered for optimum performance and long term reliable operation through a straightforward design and the use of high quality components. The solenoid based burner control automatically adjusts flame height and intensity to maintain the preset temperature. All our PAGW models are manufactured in Los Angeles.

Interior diameter 52"  
Oven entrance opening: 27" wide by 14" high  
Clearance to combustible sidewalls: 1 inch  
Weight: 5000 lb.

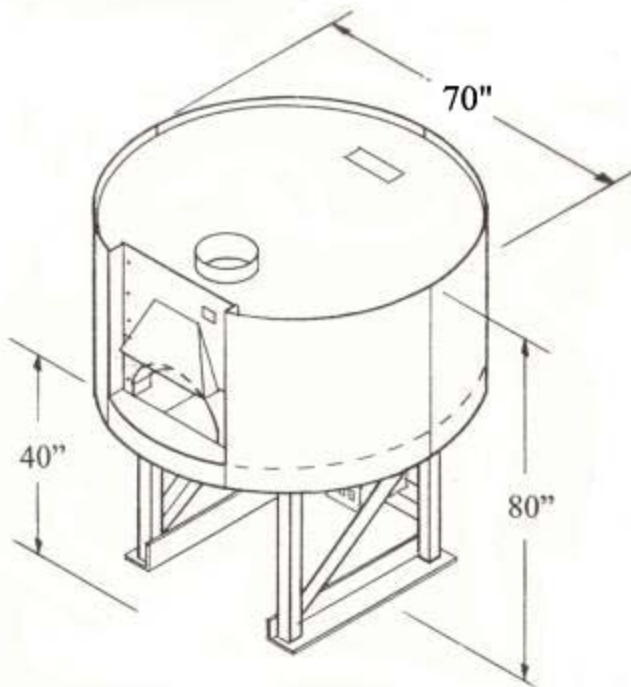
Pizza Capacities:  
8" Pizzas: 9-10  
12" Pizzas: 6-7  
16" Pizzas: 3-4



### Ovens come standard with:

- Factory finished gray paint
- Digital thermometer controller, Probe & Power supply
- Heavy duty gas burner system recessed in floor
- Ceramic fire logs
- Cast Aluminum door
- Granite shelf
- Hood cover (s/s or copper)
- Shelf apron (s/s or copper)
- S/S Flue adapter
- Metal pizza peel
- 5 year limited warranty

*Custom options and finishes available*



*Ceramic fire logs*

Gas Requirement: ¾ inch gas outlet– 7" W.C. (LP GAS 10")  
BTU's: 170,000 (Nat and LP gas)  
Electrical Requirement: 120 VAC/ 3 AMP



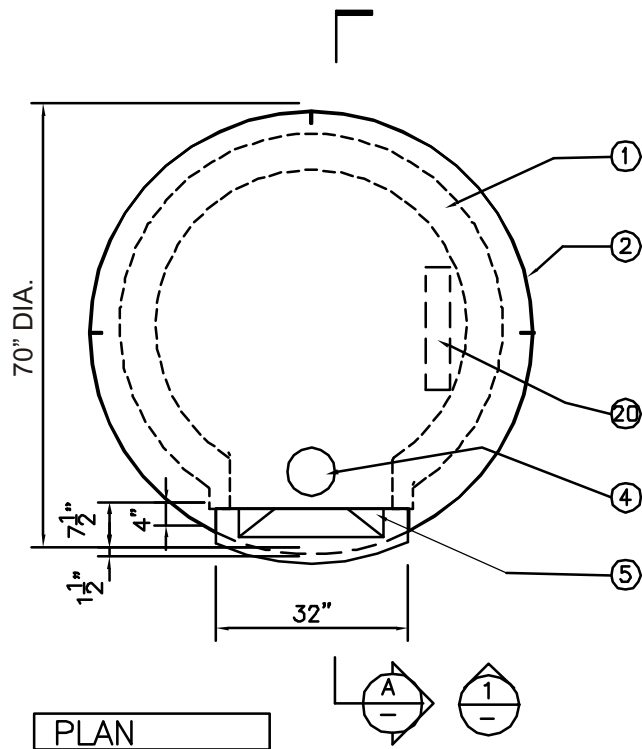
Also in Accordance  
With NSFI Standard 4

# EARTHSTONE

WOOD-FIRE OVENS

LA Research Report No. : RR-7813  
New York MEA No.: 207-98E

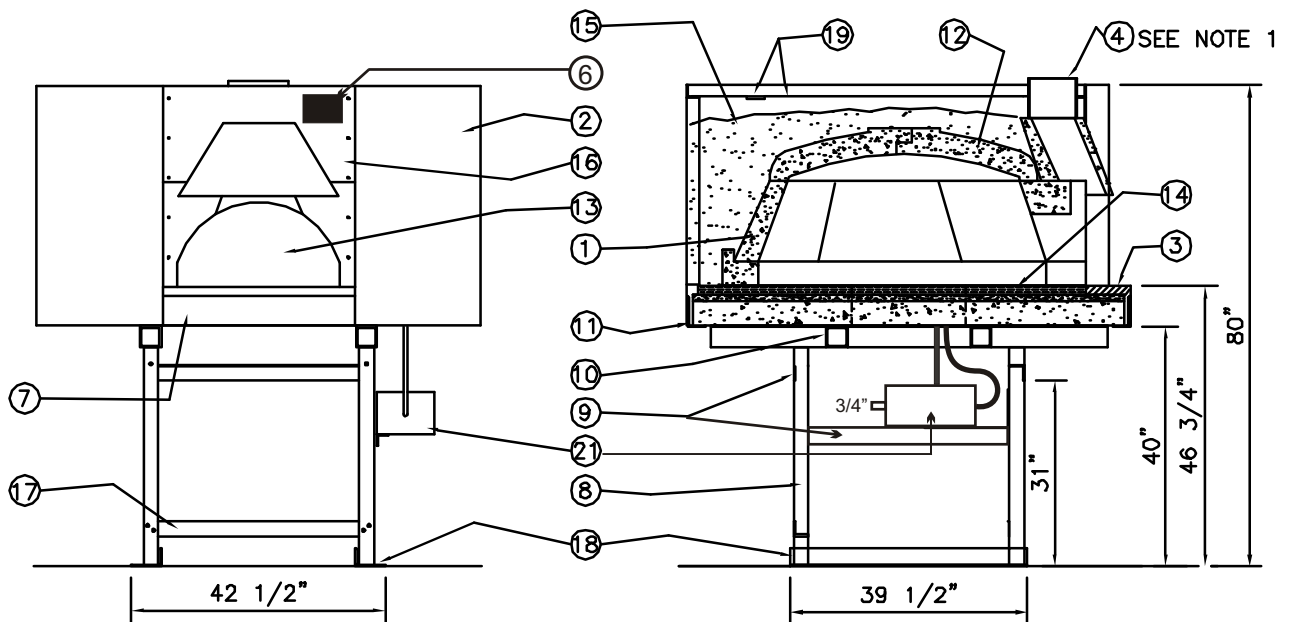
*Specifications to change without notice. revised January 2001*



PLAN

LEGEND

- ① 4"-6" REFRACTORY WALL PIECES
- 2. 16 GA. CURVED STEEL PANELS
- 3. GRANITE SHELF (STANDARD)
- 4. EXHAUST FLUE
- 5. EYEBROW HOOD W/ COVER (S.S. OR BRASS)
- 6. TEMP CONTROL READOUT PANEL
- 7. FRONT APRON (S.S. OR BRASS)
- 8. 3"x3" STEEL ANGLE
- 9. 2 1/2" STEEL ANGLE BRACING
- 10. 3 1/2" TUBE STEEL
- 11. 5"x3" PERIMETER CURVED STEEL ANGLE
- 12. TEMPERATURE PROBE
- 13. 27 1/2"x14" OVEN ENTRANCE
- 14. OVEN FLOOR TILES (12"x12")
- 15. HARDENED INSULATION FILL
- 16. 1/8" FRONT STEEL PLATES (BLACK)
- 17. 2 1/2" STEEL ANGLE (REMOVEABLE)
- 18. 5"x3" STEEL ANGLE BASE
- 19. STEEL LID W/ 4"x16" SCREEN VENT IN REAR
- 20. GAS BURNER SYSTEM RECESSED IN FLOOR
- 21. GAS BURNER OPERATING SYSTEMS BOX FLEX HOSE AND POWER CORD



FRONT ELEVATION-1

SECTION-A

NOTES:

- 1. VENTING APPLICATIONS: USE EITHER A U.L. LISTED GREASE DUCT/BUILDING HEATING APPLIANCE CHIMNEY OR U.L. LISTED TYPE 1 EXHAUST HOOD.
- 2. EXTERIOR SHEEL AND ALL STEEL PARTS ARE FACTORY FINISHED IN GRAY. (OTHER COLOR OPTIONS AVAILABLE).
- 3. GAS REQUIREMENTS: 3/4" GAS OUTLET.
- 4. ELECTRICAL REQUIREMENTS: 1-120 VOLT AC OUTLET

TOTAL WEIGHT: 5,000 LB  
GAS OUTPUT: 170,000 BTU'S

SPECIFICATIONS ARE SUBJECT TO CHANGE WITHOUT NOTICE.

SCALE: 3/8"=1'-0"

**EARTHSTONE**  
WOOD-FIRE OVENS

DATE: 10-20-96  
REVISION: 8-10-2004

TITLE:  
MODEL 130-PAGW  
GAS AND/OR WOOD FIRED OVEN

SHEET NO.  
A3