



Model MCO-ES-10

Specification:

Garland Master full-size Standard Depth Single or Double (MCO-ES-10/20) or Deep Depth Single or Double (MCO-ED-10/20) electric convection oven. 10.4 kW/cavity, 3/4 HP fan motor with variable-mode fan speed control. Master 450 Digital Control. Auto-Set Back, energy saving and Auto Cool Down features. Porcelain enameled oven interior with coved corners, Six (6) oven racks and 13-position rack guides. Interior measures 29" (736mm)W x 24" (610mm)H x 24" (610mm)D for standard depth and 29" (736mm)W x 24" (610mm)H x 28" (610mm)D for deep depth. Stainless steel front, sides, top, and legs. 60/40 dependent door design with double pane thermal window in both doors and interior lighting. Specify voltage and phase. UL, CUL, NSF listed and CE certified.



Standard Features:

- Master 450 Solid State Digital control with Cook 'n' Hold and 150°F (66°C) to 500°F (260°C) temperature range. 100 hour timer displays hours/ minutes above 60 minutes and minutes/seconds below 60 minutes
- User-programmable Auto-Setback energy saving feature sets back oven temperature to 250°F when oven idle for 30 minutes
- Auto-Cool Down feature automatically cools down oven cavity before shutting off the oven which prolongs fan motor life
- Two Speed fan control (high, low & pulse) with 3/4 HP fan motor
- Total of 10.4 kW loading per oven cavity
- Stainless steel front, sides, top, and legs
- 60/40 dependent door design with double pane thermal window in both doors and interior lighting
- Full length, stainless steel positive door closure
- Porcelain enameled oven interior with coved corners
- Six (6) chrome plated oven racks on 13-position rack guides
- Double deck models available
- One year limited parts & labor warranty (USA & Canada only).
- Five year limited door warranty, excluding window (USA & Canada only)

Optional Features:

- Master 455 Solid State Digital Control with Cook-N-Hold plus core probe
- Stainless steel solid doors
- Stainless steel oven interior
- Extra oven racks
- 4 Swivel casters, w/front brakes,
- 4 Low profile casters, w/front brakes (double ovens only)
- Stainless steel open base w/rack guides & shelf
- Mobile cart loading system w/basket dollies (deep depth oven only)
- Stainless steel back enclosure
- 460 volt, 3 phase

NOTE: Ovens supplied with casters must be installed with an approved restraining device.



Item #: _____

Models: MCO-ES10/20, MCO-ED-10/20

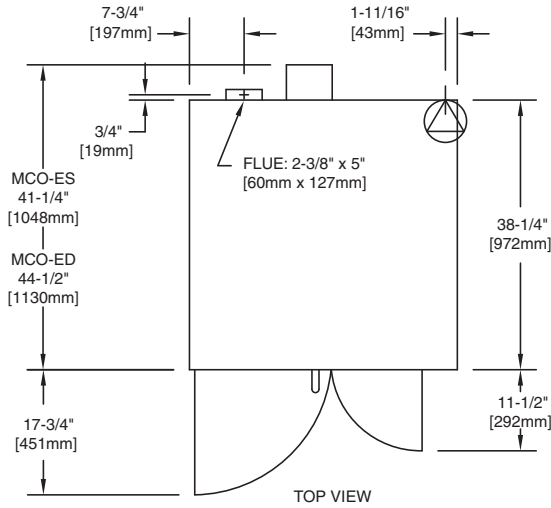
Product Name: Master Electric Convection Oven

| Model* | Total kW | Nominal Amperes Per Line, (includes 3/4 HP fan motor) | | | | | | | | | | | | | | | | |
|-----------|----------|-------------------------------------------------------|----------|----------|----|----|----------|----|----|----------|----|----|------------|----|----|----------|----|----|
| | | 208V/1Ph | 240V/1Ph | 208V/3Ph | | | 240V/3Ph | | | 460V/3Ph | | | 380V/3Ph** | | | 415V/3Ph | | |
| | | | | X | Y | Z | X | Y | Z | X | Y | Z | X | Y | Z | X | Y | Z |
| MCO-ES-10 | 10.4 | 50 | 43 | 30 | 30 | 28 | 26 | 26 | 24 | 14 | 14 | 13 | 15 | 13 | 13 | 16 | 14 | 14 |
| MCO-ED-10 | 10.4 | 50 | 43 | 30 | 30 | 28 | 26 | 26 | 24 | 14 | 14 | 13 | 15 | 13 | 13 | 16 | 14 | 14 |

**Total kW rating for 380/3 phase models is 9.0

| Model | Interior Dimensions (per oven) | | | Exterior Dimensions | | | Ship Weight/Size | |
|-----------|--------------------------------|----------|----------|---------------------|---------------|---------------|------------------|---------|
| | W:In(mm) | H:In(mm) | D:In(mm) | W:In(mm) | H:In(mm)*** | D:In(mm) | Lbs./Kg | Cu. Ft. |
| MCO-ES-10 | 29 (736) | 24 (610) | 24 (610) | 38 (965) | 57-1/2 (1461) | 41-1/4 (1048) | 550/250 | 42 |
| MCO-ES-20 | 29 (736) | 24 (610) | 24 (610) | 38 (965) | 70-1/2 (1791) | 41-1/4 (1048) | 1100/500 | 84 |
| MCO-ED-10 | 29 (736) | 24 (610) | 28 (711) | 38 (965) | 57-1/2 (1461) | 44-1/2(1130) | 550/250 | 42 |
| MCO-ED-20 | 29 (736) | 24 (610) | 28 (711) | 38 (965) | 70-1/2 (1791) | 44-1/2(1130) | 1100/500 | 84 |

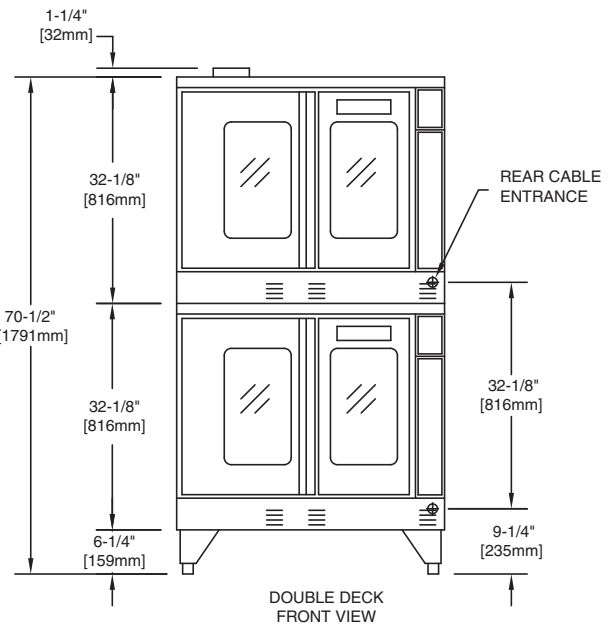
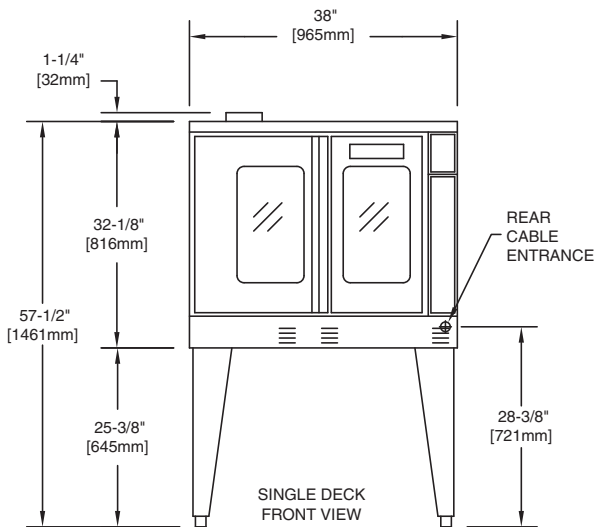
*** Height with or without standard casters. Height with low profile casters (double deck) is 68-1/2" (1740mm).



Electrical specifications include motor requirements. 3/4, HP, 2-speed motor: 1725/1140 rpm, (60Hz); or 1440/950 rpm (50Hz) Please specify electrical characteristics when ordering.

* NOTE: Double deck models with suffix "-20" are provided with individual power supply connections

| Installation Notes: | | | |
|-------------------------------------------------|-----------|------------------|------------------|
| Non-Combustible and Combustible Wall Clearances | | Entry Clearance: | |
| Sides | 1" (25mm) | Crated | 47" (1194mm) |
| Back | 3" (76mm) | Uncrated | 32-1/2" (826 mm) |



Continuous product improvement is a Garland policy. Specifications and design are subject to change without notice