



## Standard Features

- Water usage – 6.5 gallons per cycle
- 12 cycles per hour
- Fully automatic cycle - 260 seconds
- Incoming water pressure regulator
- Internally mounted electric booster heater
  - Capable of minimum 60°F temperature rise for required 180°F minimum sanitizing rinse temperature
  - One (1) 9 KW Heating Element in a 9 1/2 gallon rinse tank
- Two (2) Rotating Wash Arms - 1 upper & 1 lower
- Stationary Rinse Nozzles - Top & Bottom
- 40 Gallon Wash Tank
- Electromechanical controls
  - Safety door switch
  - Temperature control thermostat and low water protection
- Construction - 12 & 14 gauge stainless steel
- Operational and cleanability features
  - High pressure, all stainless steel wash arms
  - 28 3/4" wide x 30 1/2" high door opening
  - Double filtration system
  - Externally mounted spray down hose with spray gun nozzle
  - Waterproof LED digital gauges
  - Three wash cycles
- Installation features
  - Stainless steel control panel - easily accessible
  - Adjustable bullet feet
  - Detergent/rinse additive signal connection fuse box

## Power/Connections

### Electrical Rating

|                            |       |     |
|----------------------------|-------|-----|
| Wash Pump Motor Horsepower |       | 3/4 |
| Electric Wash Tank Heater  | Volts | KW  |
|                            | 208   | 4.1 |
|                            | 230   | 5.0 |
|                            | 460   | 5.0 |

|                                 |       |    |
|---------------------------------|-------|----|
| 40° rise Electric Rinse Booster | Volts | KW |
|                                 | 208   | 9  |
|                                 | 230   | 11 |
|                                 | 460   | 11 |

|                                 |       |      |
|---------------------------------|-------|------|
| 70° rise Electric Rinse Booster | Volts | KW   |
|                                 | 208   | 10.5 |
|                                 | 230   | 12.9 |
|                                 | 460   | 12.9 |

### Steam Requirements

|                                 |       |
|---------------------------------|-------|
| Steam Flow Pressure (PSIG)      | 15-20 |
| Consumption at 15 PSIG (lbs/hr) | 45    |

### Water Requirements

|                                       |       |
|---------------------------------------|-------|
| Inlet Temperature (°F)                |       |
| 40°F Rise                             | 140   |
| 70°F Rise                             | 110   |
| Gallons per Hour                      | 52.2  |
| Waterline Size IPS (Minimum) (Inches) | 3/4   |
| Drainline Size IPS (Minimum) (Inches) | 1 1/2 |
| Flow Pressure (PSI)                   | 15-25 |

Models with the following electrical specifications are available without UL Listing: 230/50/1, 230/50/3, 380/50/3.

## Performance/Capacities

### Operating Capacity

|                |    |
|----------------|----|
| Racks per Hour | 12 |
|----------------|----|

### Operating Cycle (Seconds)

#### Light

|             |     |
|-------------|-----|
| Wash Time   | 180 |
| Dwell Time  | 20  |
| Rinse Time  | 60  |
| Total Cycle | 260 |

#### Medium

|             |     |
|-------------|-----|
| Wash Time   | 300 |
| Dwell Time  | 20  |
| Rinse Time  | 60  |
| Total Cycle | 380 |

#### Heavy

|             |     |
|-------------|-----|
| Wash Time   | 420 |
| Dwell Time  | 20  |
| Rinse Time  | 60  |
| Total Cycle | 500 |

### Operating Temperatures

|                      |     |
|----------------------|-----|
| Wash – °F (Minimum)  | 150 |
| Rinse – °F (Minimum) | 180 |

### Frame Dimensions (Inches)

|                    |             |
|--------------------|-------------|
| Width              | 45 1/2      |
| Depth              | 43 (45 gas) |
| Height             | 78 1/2      |
| Height (door open) |             |
| Electric           | 103 1/2     |
| Gas                | 106         |

|                          |    |
|--------------------------|----|
| Wall Clearance (Minimum) | 16 |
|--------------------------|----|

|                                     |         |
|-------------------------------------|---------|
| Wall Clearance (Control Panel Side) | 36 Wall |
|-------------------------------------|---------|

|                  |    |
|------------------|----|
| Clearance (Back) | 12 |
|------------------|----|

|                        |      |
|------------------------|------|
| Shipping Weight (Lbs.) | 1175 |
|------------------------|------|

### Shipping Size (Inches)

|        |    |
|--------|----|
| Width  | 52 |
| Depth  | 54 |
| Height | 90 |

# CL-10 Pot & Pan Washer

## Corner Load Type

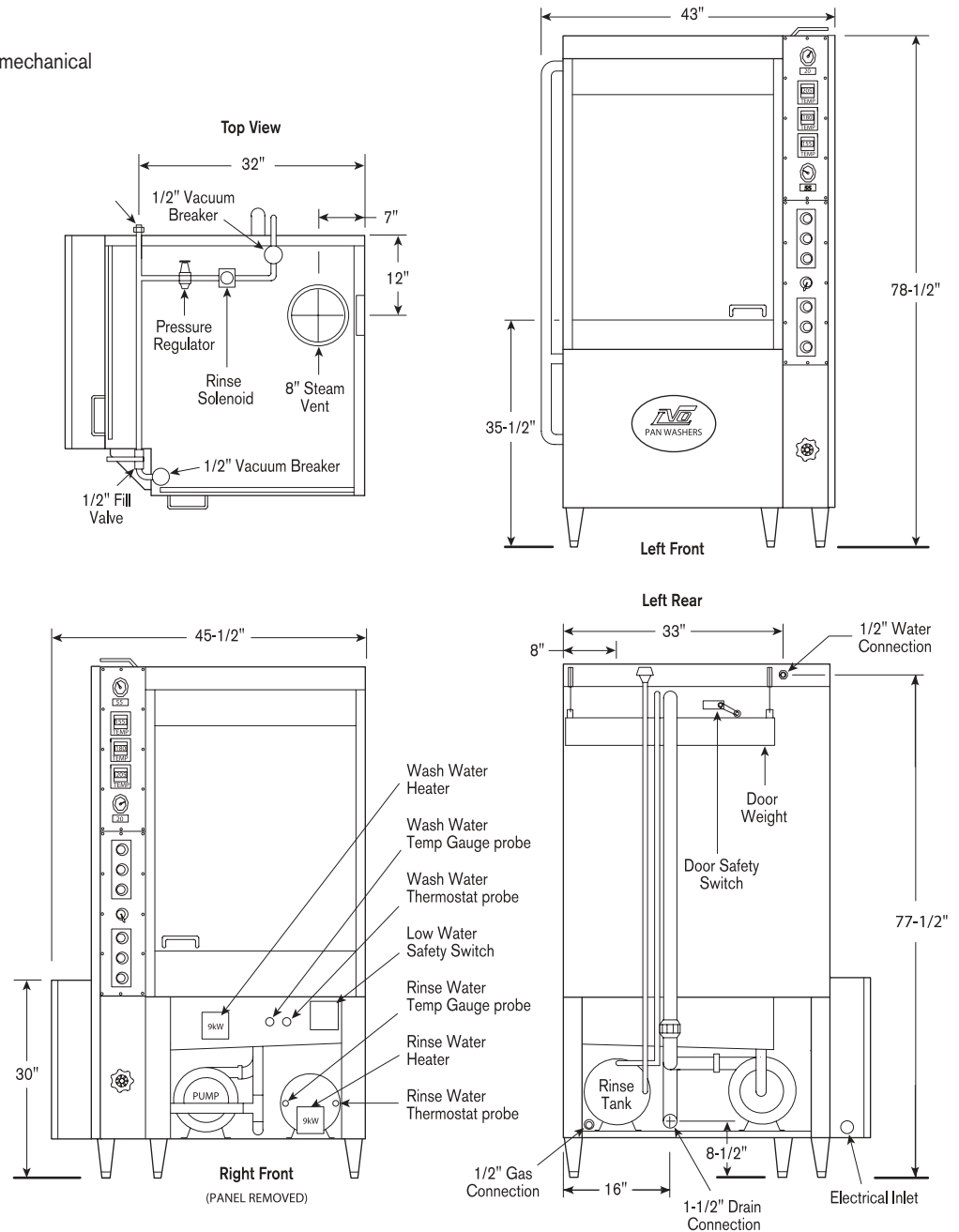
### Short Form Specifications

Item No. \_\_\_\_\_

Unit shall be LVO/Jackson CL-10 Corner Load door style hot water sanitizing pot & pan washer. Electrical characteristics to be \_\_\_ volts / 60 cycles / \_\_\_ phase operation with a 260 second automatic cycle using 78 gallons of 180° F. final rinse water per hour. Stainless steel construction to include hood, frame, wash tank, and adjustable feet. A 7.5 HP motor mounted to a pump with a impeller shall be mounted to the machine frame. As standard the unit shall include:

- Single point connections for all utilities
- Side mounted control box with electro-mechanical components.
- Three Wash times cycle switch
- Built-in water pressure regulator

Unit shall be NSF and UL Approved.



**Jackson**



Pizzaovens.com

1.877.FOR.OVEN  
367.6836

Since 1999



xxxxx-xxx-xx-xx 6/04  
All specifications subject to change without notice.