



Conserved XL2



Standard Features

- 1.5 gallons per rack.
- 74 racks per hour
- Automatic 90 second timed wash, flush and rinse cycle.
- Built-in dispensing pumps (3) for detergent, rinse agent and sanitizer are controlled by cycle timer and each has individual priming switch.
- Control box located on top of machine for ease of operation.
- Delimiting switch for easy removal of hard water deposits from machine.
- Safety door switch.
- Built-in waste accumulator.
- Stainless steel bullet feet for leveling.
- Interchangeable upper and lower wash/rinse arms.
- Wash/rinse thermometer.
- Heavy duty stainless steel construction.

Power/Connections

Electrical Rating

Wash Pump Motor Horsepower (2) 3/4

Water Requirements

Inlet Temperature (Minimum) °F 120
 Inlet Temperature (Recommended) °F 140
 Gallons per Hour 111
 Waterline Size IPS (Minimum) (Inches) 3/4
 Drainline Size IPS (Minimum) (Inches) 2
 Flow Pressure (PSI) 15-25
 Minimum Chlorine Required (PPM) 50

Performance/Capacities

Operating Capacity

Racks per Hour 74
 Dishes per Hour 1850
 Glasses per Hour 1850

Operating Cycle (Seconds)

Wash Time 40
 Rinse Time 25
 Dwell Time 25
 Total Cycle 90

Pump Capacity (2 Pumps)

Gallons per Minute (each) 61

Operating Temperatures

Wash – °F (Minimum) 120
 Wash – °F (Recommended) 140
 Rinse – °F (Minimum) 120
 Rinse – °F (Recommended) 140

Frame Dimensions (Inches)

Width 44 1/8
 Depth 25 7/8
 Height 66 1/4
 Standard Table Height 34
 Wall Clearance (Minimum) 4
 Inside Clearance (Height) 17 1/4

Shipping Weight (Lbs.)

Basic model 560

Shipping Size (Inches)

Width 55
 Depth 30
 Height 78

Conservar XL2

Door Type

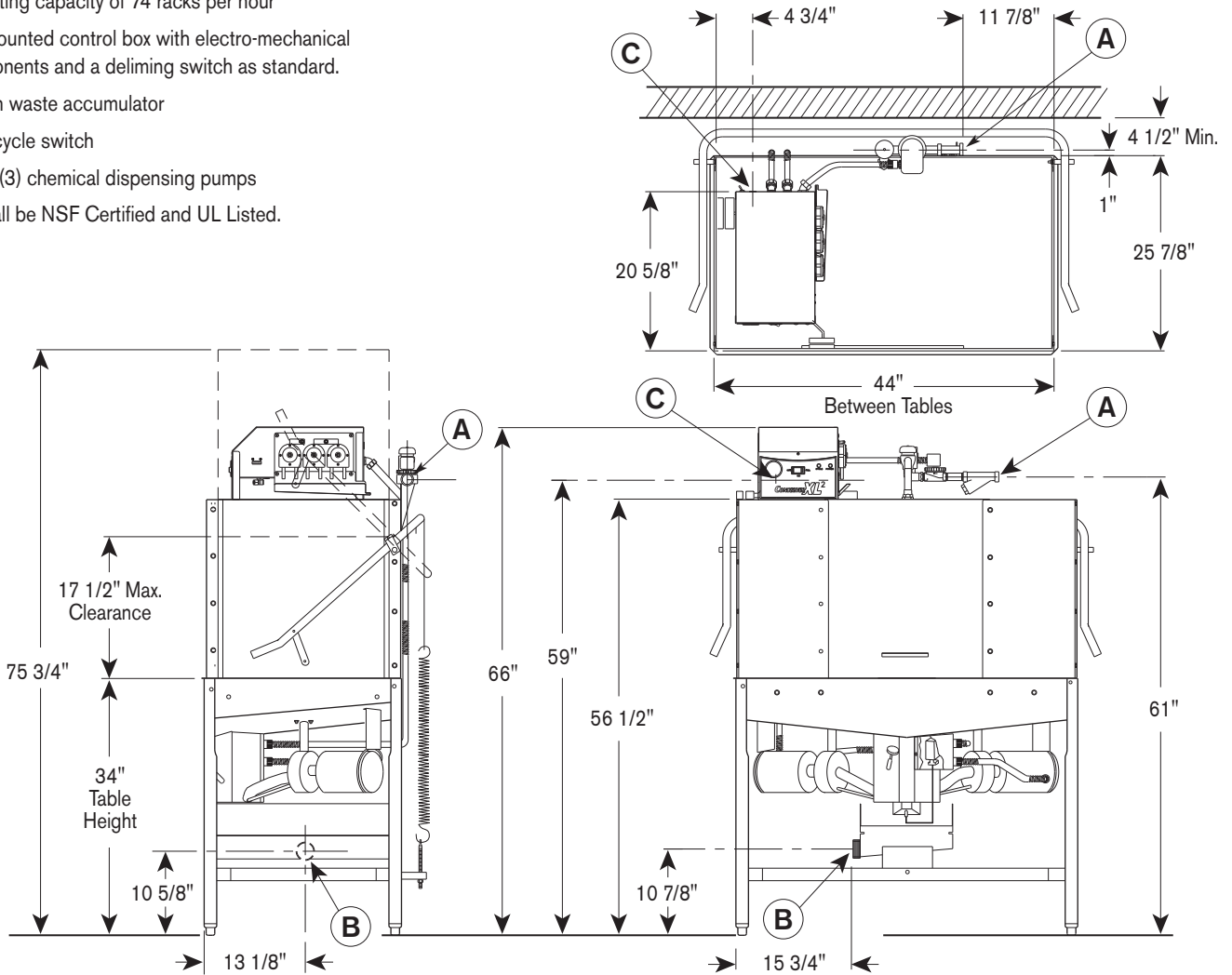
Short Form Specifications

Item No. _____

Unit shall be Jackson Conservar XL2 upright door chemical sanitizing dishmachine. Electrical characteristics to be 115 or 240 volts / 60 cycles / single phase operation with a 90 second automatic cycle using 111 gallons of 120°F. minimum (140°F recommended) final rinse water per hour. Stainless steel construction to include hood, frame, wash tank, and adjustable feet. Two (2) 3/4 HP motors mounted to a cast iron pumps with a stainless steel impeller shall be mounted to the machine frame. As standard the unit shall include:

- Operating capacity of 74 racks per hour
- Top mounted control box with electro-mechanical components and a delimiting switch as standard.
- Built-in waste accumulator
- Door cycle switch
- Three (3) chemical dispensing pumps

Unit shall be NSF Certified and UL Listed.



LEGEND:

- A - Water inlet 3/4" FNPT
- B - Drain connection - 2 MNPT
- C - Electrical connection. (See table)

All dimensions in inches.

All vertical dimensions are +/- 1/2" from floor due to adjustable bullet feet.

Approximate Total

Load Amps

115/60/1	22.8
240/60/1	11.4

