

SCOTSMAN

AIR, WATER, & REMOTE COOLED MODULAR CONTOUR CUBERS




Restaurant Equipment Worldwide
Toll Free: 877.FOR.OVEN
International: +1 859.885.1988



CME656

VOLUME PRODUCTION • 24 HOUR

 Certified & rated in accordance with ARI standard 010-95	Air-Cooled		Water-Cooled		Remote	
	70°/50° lbs./kg.	ARI 90°/70° lbs./kg.	70°/50° lbs./kg.	ARI 90°/70° lbs./kg.	70°/50° lbs./kg.	ARI 90°/70° lbs./kg.
CME656-32	705/320	583/264	645/293	575/261	625/284	575/261
CME656-3	705/320	583/264	645/293	575/261	625/284	575/261

VALUE THE DIFFERENCE OF CM³ ICE MACHINES:

- CM³ series offers the lowest lifetime operating costs based on lower water and electrical usage. Combine that with a competitive purchase price and the best warranty in the industry and you have the lowest lifetime ownership cost. Period.
- AutoIQ™ Control System monitors and controls the ice machines' functions to ensure consistent ice production and reduce operating costs.
- CM³ Evaporator is a hot tin dipped, molecularly bonded plate that has been field tested and proven 99.4% reliable over 5 years.
- Rust-free Polyethylene Base and Food Zone is insulated with 1-1/2" of foam which keeps water and food zone cool to reduce operating costs and is backed by a Lifetime Rust-free Warranty.
- Contemporary styling and stainless steel finish make the CM³ a perfect addition to any operation.

WARRANTY See your dealer for complete warranty details.

- Limited Lifetime Rust Free Warranty on Food Zone
- 3 years parts and labor on all components.
- 5 years parts and labor on the CME evaporator.
- 5 years parts on the compressor and condensor.

BIN OPTIONS:



Bin: HTB350



Bin: BH550



APPROX. CUBE SIZE:
1 3/8" X 1 3/8" X 1/8" THICK

SCOTSMAN MODULAR BINS					
Model Number	Dimensions W"xD"xH"	ARI Bin Capacity	Application Capacity	Finish*	Ship Weight lbs./kg.
HTB250	30 x 31.5 x 22.5	190 LBS.	250 LBS.	HTB	89/36
HTB350	30 x 31.5 x 29.5	270 LBS.	350 LBS.	HTB	99/41
HTB555	30 x 34.5 x 44.5	420 LBS.	535 LBS.	HTB	110/50
BH550	30 x 31.5 x 44	410 LBS.	520 LBS.	SS	140/64

* (HTB) Linear Low Density Polyethylene—Grey color.
(SS) Stainless Steel with Polyethylene liner.



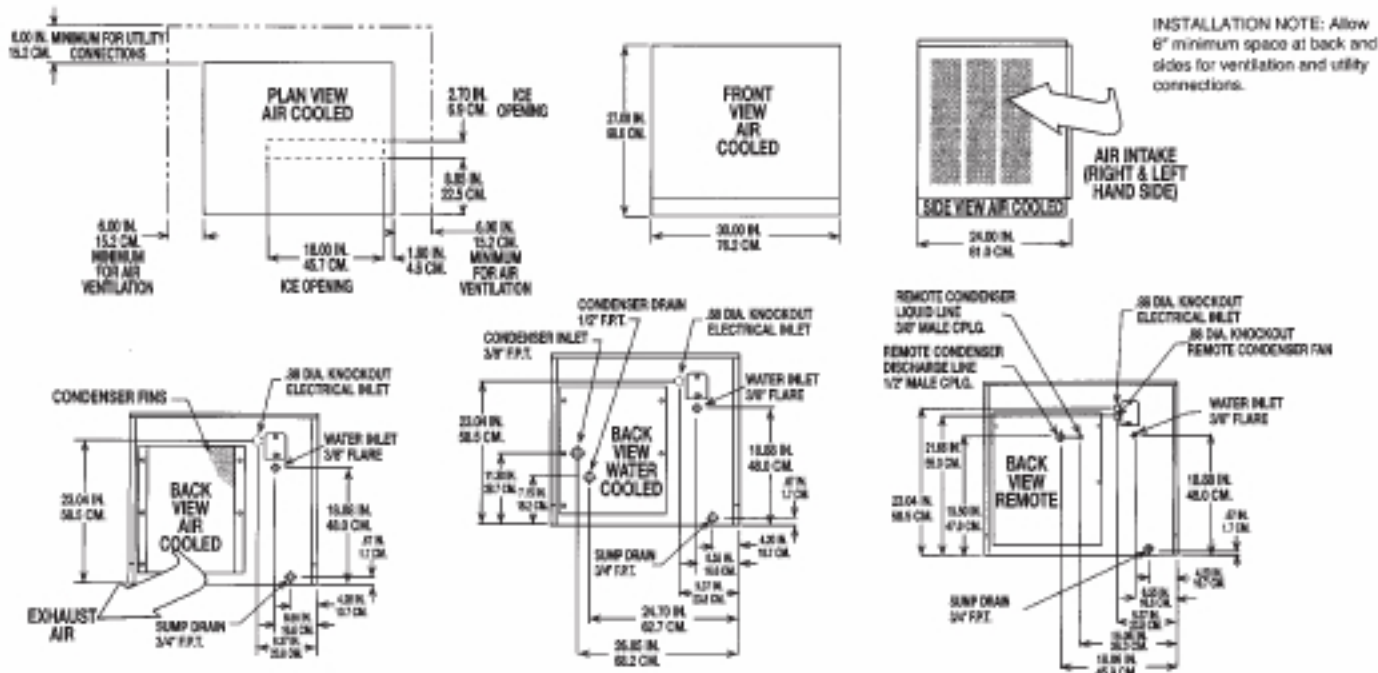
Scotsman is proud to announce that we are ISO-9001:2000 Certified



Scotsman



Ice Machine Specifications



All models: Dimensions: W x D x H Unit: 30" x 24" x 27" Shipping Carton: 33 1/2" x 28" x 32 1/2"

Model Number	Condenser Unit	Basic Electrical Volts/Hz/Phase	Max. Fuse Size or HACR Circuit Breaker	Comp. HP	Circuit Wires	Min. Circuit Ampacity	BTU's per hour	Shipping Weight lbs./kg.	Power* Consumption KWH/100 lbs. 90°/70° F	Water Usage* Gallons/100 lbs. Potable 90°/70° F	Condenser 90°/70° F
CME656AS-32F	AIR	208-230/60/1	20	1 1/2	2	13.6	12,500	225/102	6.1	15.0	-
CME656WS-32F	WATER	208-230/60/1	20	1 1/2	2	12.7	12,500	225/102	6.0	15.0	130
CME656RS-32F	REMOTE	208-230/60/1	20	1 1/2	2	16.9	12,500	235/107	6.2	15.0	-
CME656AS-3F	AIR	208-230/60/3	15	2	3	6.6	12,500	220/100	6.1	15.0	-
CME656WS-3F	WATER	208-230/60/3	15	2	3	5.8	12,500	225/102	6.0	15.0	130
CME656RS-3F	REMOTE	208-230/60/3	15	2	3	5.9	12,500	235/102	6.7	15.0	-

All units with Stainless Steel Finish.
Refrigerant: R-404A.

OPTIONS:

Stacking Kit: Number KSCM6-30 (CME256, CME506, CME656 or CME806, CME656 or CME256, CME506, CME656, or CME806).

REMOTE CONDENSER - Comes with adjustable legs

Dimensions: W x D x H: 24.0" x 44.25" x 29.25" for ERC206
24.0" x 54.25" x 29.25" for ERC402

Model Number	For Use With	Cond. Unit	Finish Basic	Electrical Volts/Hz/Phase	No. of Wires	Min. Circuit Ampacity	Max Fuse Size or HACR Circuit Breaker
ERC201-32A	1-CME656R	Air	Galvanized	208-230/60/1	2	2.6	15
ERC402-32A	2-CME656R	Air	Galvanized	208-230/60/1	2	2.6	15

IMPORTANT OPERATING REQUIREMENTS:

	Minimum	Maximum
Air Temperature	50°F (10°C)	100°F (37.7°C)
Water Temperature	40°F (4.4°C)	100°F (37.7°C)
Remote Cond. Temp.	-20°F (-28.9°C)	120°F (48.9°C)
Water Pressure	20 PSIG	120 PSIG
Electrical Voltage	-5%	+10%

Scotsman's ice machines are not designed for outdoor installations. Scotsman remote condensers are designed for outdoor installations.

Machine requires voltage indicated on rating name plate. Failures caused by improper voltage are not considered factory defects. Extended periods of operation at temperatures exceeding limitations constitutes misuse under the terms of Scotsman Manufacturer's Limited Warranty, resulting in a loss of warranty coverage. Specifications and design are subject to change without notice.

Consult Your Local SCOTSMAN Representative At:

Pizzaovens.com Restaurant Equipment Worldwide
Toll Free: 877.FOR.OVEN
International: +1 859.885.1988
Established 1999

