

SCOTSMAN

AIR, WATER, & REMOTE COOLED MODULAR CONTOUR CUBERS



CME806

VOLUME PRODUCTION • 24 HOUR

Certified & rated in accordance with ARI standard 810-95	Air-Cooled		Water-Cooled		Remote	
	70°/50° lbs./kg.	ARI 90°/70° lbs./kg.	70°/50° lbs./kg.	ARI 90°/70° lbs./kg.	70°/50° lbs./kg.	ARI 90°/70° lbs./kg.
CME806-32	770/349	630/286	765/347	670/305	750/340	670/305
CME806-3	770/349	630/286	765/347	670/305	750/340	670/305

VALUE THE DIFFERENCE OF CM³ ICE MACHINES:

- CM³ series offers the lowest lifetime operating costs based on lower water and electrical usage. Combine that with a competitive purchase price and the best warranty in the industry and you have the lowest lifetime ownership cost. Period.
- AutoIQ™ Control System monitors and controls the ice machines' functions to ensure consistent ice production and reduce operating costs.
- CM³ Evaporator is a hot tin dipped, molecularly bonded plate that has been field tested and proven 99.4% reliable over 5 years.
- Rust-free Polyethylene Base and Food Zone is insulated with 1-1/2" of foam which keeps water and food zone cool to reduce operating costs and is backed by a Lifetime Rust-Free Warranty.
- Contemporary styling and stainless steel finish make the CM³ a perfect addition to any operation.
- Now protected with AquaArmor™ utilizing AgION™, a silver-based anti-microbial compound that reduces the growth of bacteria, microorganisms, algae, mold and slime on ice machine surfaces. AgION is a trademark of AgION Technologies and is registered with the EPA.

WARRANTY See your dealer for complete warranty details.

- Limited Lifetime Rust Free Warranty on Food Zone.
- 3 years parts and labor on all components.
- 5 years parts and labor on the CME evaporator.
- 5 years parts on the compressor and condenser.

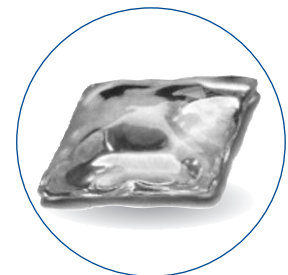
BIN OPTIONS:



BIN: BH550



BIN: BH800



APPROX. CUBE SIZE:
1 3/8" X 1 3/8" X 5/8" THICK

SCOTSMAN MODULAR BINS		Certified & rated in accordance with ARI standard 820-95			
Model Number	Dimensions W"xD"xH"	ARI Bin Capacity	Application Capacity	Finish	Ship Weight lbs./kg.
HTB555	30 x 34.5 x 44.5	420 LBS.	535 LBS.	HTB	110/50
BH550S-C	30 x 31.5 x 44	410 LBS.	520 LBS.	SS	140/64
BH800S*	42 x 31.5 x 44	580 LBS.	740 LBS.	SS	175/79

(HTB) Linear Low Density Polyethylene—Grey color. (SS) Stainless Steel with Polyethylene Liner. *See Price Schedule For Appropriate Bin Top

This product qualifies for the following listings:

 Rated in accordance with ARI standard 810-95



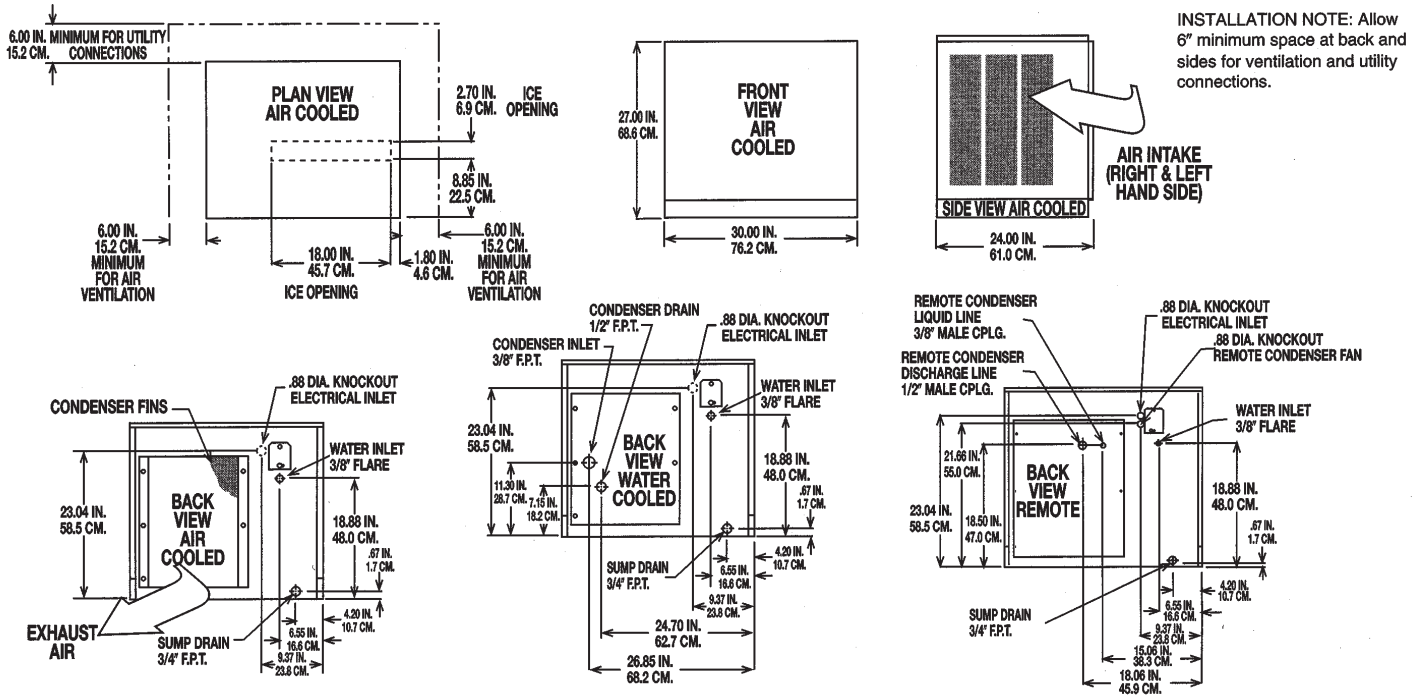
CERTIFIED

 9001:2000





Ice Machine Specifications



All models: Dimensions: W x D x H Unit: 30" x 24" x 27" Shipping Carton: 33 1/2" x 28" x 32 1/2"

Model Number	Condenser Unit	Basic Electrical Volts/Hz/Phase	Max. Fuse Size or HACR Circuit Breaker	Comp. HP	Circuit Wires	Min. Circuit Ampacity	BTU's per hour	Shipping Weight lbs./kg.	Power Consumption KWH/100 lbs. 90°F/70° F	Water Usage Gallons/100 lbs.	
										Potable 90°F/70° F	Condenser 90°F/70° F
CME806AS-32F	AIR	208-230/60/1	20	2 1/2	2	17.5	15,500	235/107	7.2	24.0	-
CME806WS-32F	WATER	208-230/60/1	20	2 1/2	2	16.0	15,500	235/107	6.0	22.0	155
CME806RS-32F	REMOTE	208-230/60/1	30	2 1/2	2	20.0	15,500	235/107	7.8	24.0	-
CME806AS-32F	AIR	208-230/60/3	15	2 1/2	3	13.3	15,500	235/107	7.2	24.0	-
CME806WS-3F	WATER	208-230/60/3	15	2 1/2	3	11.8	15,500	235/107	6.0	22.0	155
CME806RS-3F	REMOTE	208-230/60/3	15	2 1/2	3	13.9	15,500	235/107	7.8	24.0	-

Units with Stainless Steel finish.

OPTIONS:
 Packing Kit: KSCME6-30
 Refrigerant: R-404A.

REMOTE CONDENSER—Comes with adjustable legs
 dimensions: W x D x H : 24.0" x 44.25" x 29.25" for ERC201
 24.0" x 54.25" x 29.25" for ERC402

Model Number	For Use With	Cond. Unit	Finish Basic	Electrical Volts/Hz/Phase	No. of Wires	Min. Circuit Ampacity	Max Fuse Size or HACR Circuit Breaker
RC201-32A	1-CME806R	Air	Galvanized	208-230/60/1	2	2.6	15
RC402-32A*	2-CME806R	Air	Galvanized	208-230/60/1	2	2.6	15

CMR-230—Fan Relay Kit: Required to connect two CME806R's to one ERC402-32A
E-CHARGED REFRIGERANT TUBE KITS: 25-Foot, RTE25 • 40-Foot, RTE40 • 75-Foot, RTE75 R, Refrigerant: R-404A

Scotsman's ice machines are not designed for outdoor installations. Scotsman remote condensers are designed for outdoor installations.

Scotsman's ice machines require voltage indicated on rating name plate. Failures caused by improper voltage are not considered factory defects. Extended periods of operation at temperatures exceeding limitations constitutes misuse under the terms of Scotsman Manufacturer's Limited Warranty, resulting in a loss of warranty coverage. Specifications and signs are subject to change without notice.

Consult Your Local SCOTSMAN Representative At:

IMPORTANT OPERATING REQUIREMENTS:

	Minimum	Maximum
Air Temperatures	50°F (10°C)	100°F (37.7°C)
Water Temperatures	40°F (4.4°C)	100°F (37.7°C)
Remote Cond. Temps	-20°F (-28.9°C)	120°F (48.9°C)
Water Pressures	20 PSIG	120 PSIG
Electrical Voltage	-5%	+10%



Pizzaovens.com

1.877.FOR.OVEN
367.6836

Since 1999

