

SCOTSMAN

UNDERCOUNTER COMPACT CUBER WITH STORAGE



Pizzaovens.com

1.877.FOR.OVEN
367.6836

Since 1999

SCE170

VOLUME PRODUCTION • 24 HOUR

	Air-Cooled		Water-Cooled	
	70°/50° lbs./kg.	ARI 90°/70° lbs./kg.	70°/50° lbs./kg.	ARI 90°/70° lbs./kg.
SCE170-1	165/75	110/50	165/75	142/64



DEPENDABLE PERFORMANCE IN ANY CONDITION:

- 70 lbs. of storage.
- Removable cabinetry facilitates easy access for maintenance.
- Front access to air filter, control box, water pump and float.
- With removable, cleanable air filter.
- Cabinet constructed of durable rust-free rotocast plastic.
- 7 ft. powercord for quick installation.

WARRANTY *See your dealer for complete warranty details.*

- 3 years parts and labor on all components.
- 5 years parts and labor on evaporator.
- 5 years parts on the compressor and condenser.



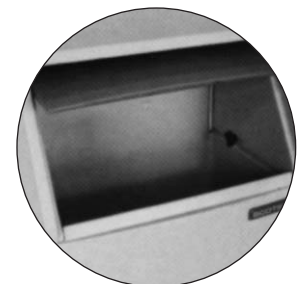
UNDERCOUNTER INSTALLATION

Adapts to numerous under-counter applications. Fits under any 40" counter.



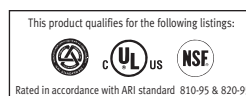
WAFFLE ICE

Approx. Size
7/8" X 1/2" X 1"

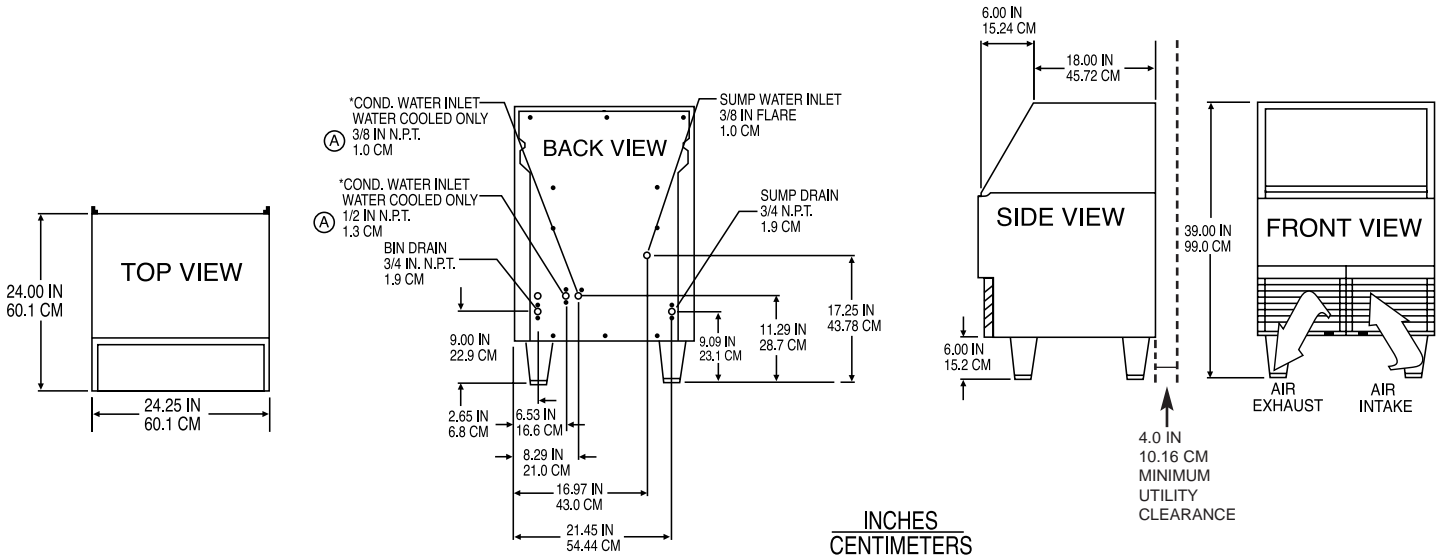


SLIDE AWAY ACCESS DOOR

Provides convenient and easy access to ice.



Ice Machine Specifications



INSTALLATION NOTE: Allow 6" minimum space at back for utility connections.

All models: Dimensions: W x D x H without legs (Add 6" height for legs): Unit: 24-1/4" x 24" x 33" Shipping Carton: 27-1/2" x 27" x 39"

Model Number	Condenser Unit	Bin* Cap. lbs./kg.	Basic Electrical Volts/Hz/Phase	Max. Fuse Size or HACR Circuit Breaker	Comp. HP	Circuit Wires	Min. Circuit Ampacity	Shipping Weight lbs./kg.	Power Consumption KWH/100 lbs. 90°F/70°F	Water Usage Gallons/100 lbs.	
										Potable 90°F/70°F	Condenser 90°F/70°F
SCE170A-1C	AIR	70/32	115/60/1	15	1/4	2	CORD	185/84	12.8	50.0	-
SCE170W-1C	WATER	70/32	115/60/1	15	1/4	2	CORD	180/82	9.5	55.0	210

*Bin capacity rated in accordance with ARI Standard 820-95.

Finish: rotocast grey plastic.
 Refrigerant-R-404A

LEGS SUPPLIED:
 Four plastic legs screw into mounting plates on cabinet base. Provides 6" minimum height.

Scotsman's ice machines are not designed for outdoor installations. Scotsman remote condensers are designed for outdoor installations.

Machine requires voltage indicated on rating name plate. Failures caused by improper voltage are not considered factory defects. Extended periods of operation at temperatures exceeding limitations constitutes misuse under the terms of Scotsman Manufacturer's Limited Warranty, resulting in a loss of warranty coverage. Specifications and design are subject to change without notice.

Consult Your Local SCOTSMAN Representative At:

IMPORTANT OPERATING REQUIREMENTS:

	Minimum	Maximum
Air Temperatures	50°F (10°C)	100°F (37.7°C)
Water Temperatures	40°F (4.4°C)	100°F (37.7°C)
Water Pressures	20 PSIG	120 PSIG
Electrical Voltage	-5%	+10%



Pizzaovens.com

1.877.FOR.OVEN
367.6836

Since 1999

YOU'LL VALUE THE DIFFERENCE™

Scotsman