



Item No. _____
 Project _____
 Quantity _____

Electric, Air Door Pizza Ovens

Model: PPP-[1,2,3]



Model PPP-1 shown

PIZZA CAPACITY GUIDE

Model\Pizza Size:	8"	10"	12"	14"	16"	18"
PPP-1 Single Oven	28	15	12	8	6	6
PPP-2 Double Oven	56	30	24	16	12	12
PPP-3 Triple Oven	84	45	36	24	18	18

SHORT/BID SPECIFICATION

Pizza Oven[s] shall be **LANG Manufacturing Model PPP-__** [Insert 1, 2 or 3], 12.1-kW [each] electric heated deck type oven, with: 8.5" high cooking compartment; full-width, solid pull-down door with air-curtain technology for open-door display cooking; all stainless steel exterior; Transite II cooking deck with removable crumb tray; 300-650°F cooking control with separate upper & lower heat controls; plus all the features listed and options/accessories checked:

STANDARD PRODUCT WARRANTY

One year, parts & labor

CONSTRUCTION FEATURES

- Heavy duty 430 Series stainless steel exterior, with attractive No. 4 finish
- Cooking deck is Transite II [non-asbestos]
- Heavy duty spring-loaded pull-down door, with grab-bar handle
- Air curtain technology for full time open-door cooking
- Lift-out crumb tray
- Interior lighting provided

PERFORMANCE FEATURES

- Air curtain reduces energy loss during loading & unloading
- Air curtain ensures consistent bake times and results
- Open door cooking provides fresh-bake smell, sounds and visual for merchandising
- No door to open & close - safer for cooks
- Top & bottom mounted heating elements enclosed in Incoloy sheathing
- Stackable up to three high, for more capacity in same footprint
- 300-650°F operating temperature range

CONTROL PACKAGE [Per Deck]

- Separate top and bottom heating element controls
- 4-heat switch for fine tuning cooking
- Power-ON switch & indicator light



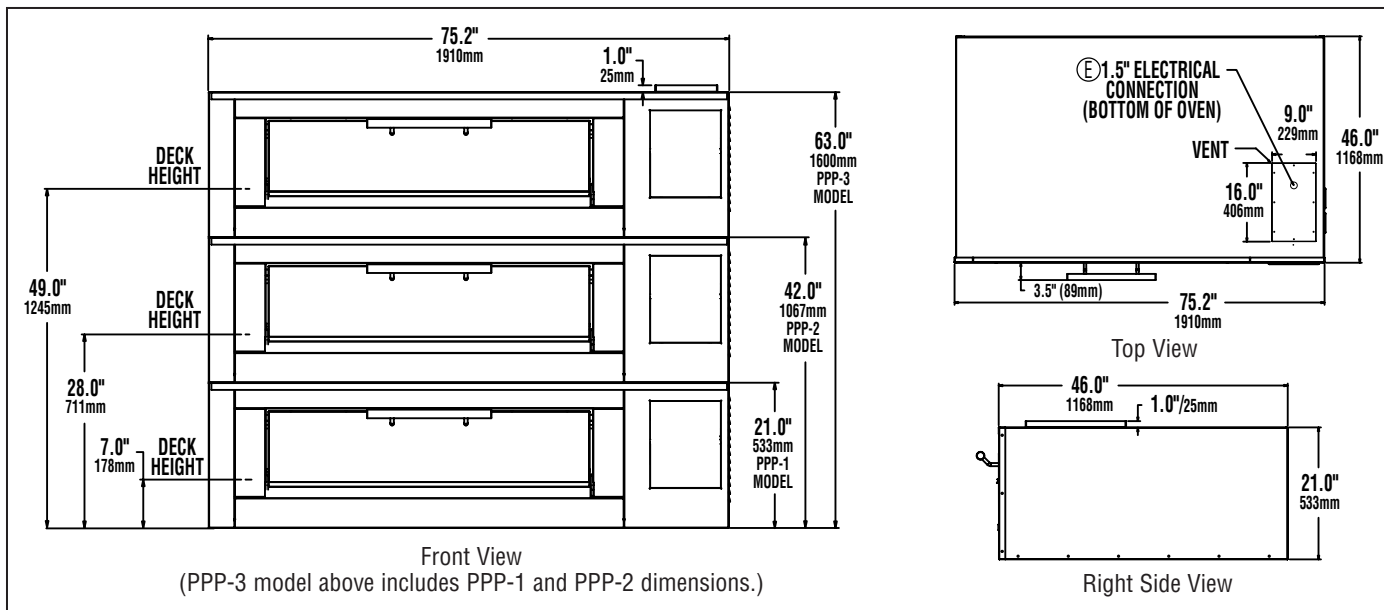
Sheet No. **LSP-D4** (rev. 7/03)

INSTALLATION REQUIREMENTS

- (E) 208V or 240V, 1-Phase or 3-Phase power required; or 480V, 3-Phase as option
- Direct mounting on masonry base or use of optional legs
- Installation under approved vent hood may be required. Consult local codes. [Power connection[s] from bottom. See below]

OPTIONS & ACCESSORIES

- ☐ 480V, 3-phase model, per oven deck
- ☐ 34" stainless steel angular legs for PPP-1 Model
- ☐ 25" stainless steel angular legs for PPP-2 Model
- ☐ 6" stainless steel angular legs for PPP-3 Model



Model	Height x Width x Depth (without optional legs)		Clearance from combustible surface*	Weight		Freight Class
	External	Internal		Actual	Shipping	
PPP-1	21.0" x 75.2" x 46.0" 533mm x 1910mm x 1168mm	8.5" x 55.3" x 36.0" 216mm x 1405mm x 914mm	Sides: 2.0" (51mm) Back: 2.0" (51mm)	700 lbs. 318 kg	850 lbs. 386 kg	70
PPP-2	42.0" x 75.2" x 46.0" 1067mm x 1910mm x 1168mm	8.5" x 55.3" x 36.0" 216mm x 1405mm x 914mm	Sides: 2.0" (51mm) Back: 2.0" (51mm)	1,400 lbs. 635 kg	1,700 lbs. 771 kg	70
PPP-3	63.0" x 75.2" x 46.0" 1600mm x 1910mm x 1168mm	8.5" x 55.3" x 36.0" 216mm x 1405mm x 914mm	Sides: 2.0" (51mm) Back: 2.0" (51mm)	2,100 lbs. 953 kg	2,550 lbs. 1157 kg	70

* Noncombustible floor only.

Voltage	(E) Electrical Requirements By Model						
	Phase	Model PPP-1		Model PPP-2		Model PPP-3	
		Total kW	Amps/Line	Total kW	Amps/Line	Total kW	Amps/Line
208V/60Hz	1	12.1	58.2	24.2	116.3	36.3	174.5
240V/60Hz	1	12.1	50.4	24.2	100.8	36.3	151.3
208V/60Hz	3	12.1	50.4	24.2	74.9	36.3	100.6
240V/60Hz	3	12.1	43.7	24.2	65.0	36.3	86.6

CAD SYMBOLS & PRICING



Due to continuous improvements, specifications subject to change without notice.



Sheet No. LSP-D4 (rev. 7/03)

LANG MANUFACTURING COMPANY • 6500 Merrill Creek Parkway, Everett, WA 98203
TOLL FREE: 800.882.6368 • FAX: 425.349.2733 • www.langworld.com