

Wood Stone

FIRE DECK 9690

Stone Hearth Deck Oven



All storage boxes and/or access panels must remain easily removable after installation.

Job Name	
Model	WS-FD-9690-CL
Item#	
Fuel Type	Gas-Fired and Coal-Fired

Hearth Capacity	
8" pizzas	48
10" pizzas	28
12" pizzas	20
16" pizzas	12
18" or 20" pizzas	6

Assuming 5-minute cook times, the approximate maximum hourly production capacity can be calculated by multiplying the above numbers by 12.

OPTIONAL ACCESSORIES

- Decorative Flame
- Stainless Steel Storage Boxes
- Stainless Steel Oven Tool Set (with stainless steel hangers)
- Stack-Mounted Exhaust Fan
- Custom Oven-Mounted Exhaust Hood
- Temporary Rigging Casters
- Prepared for facade application
- Wood Stone also carries a full line of accessories for stone-hearth cooking

The Coal-fired Fire Deck 9690 features a standard door opening 60 inches wide x 10 inches high. The cooking surface is 72 inches wide, and 76 inches deep, resulting in 38 square feet of usable deck space. The dense, high temperature ceramic formulation of which the hearth and dome are cast creates a "deep heat sink" within the chamber of the oven. The Fire Deck is unique among deck ovens in that it can easily accommodate six 20-inch pizzas, or 6 full sized sheet pans.

The Coal-fired Fire Deck is a variation of our standard Fire Deck 9690 gas-fired oven. The oven has been modified to achieve an excellent balance of top and bottom heat while burning coal, and to optimize air flow to the coal fire. The coal-fired model utilizes one gas-fired wall of radiant flame on one side of the oven opposite the coal fire, and a thermostatically controlled gas infrared burner beneath the oven deck.

The 4,000-pound, monolithic, cast-ceramic floor sits on 4 inches of rigid insulation and is poured to a thickness of 6 inches. The 2,400-pound, monolithic dome is also cast to a thickness of 4 inches. The hearth and dome are connected by a carefully tensioned steel exoskeleton, which ensures structural integrity and long life.

The body of the oven rests on a 10-gauge steel pan welded to a heavy-duty frame. The oven's ceramic dome is wrapped with at least 2 inches of spun ceramic fiber insulation and enclosed (front, top and sides) with 16-gauge galvanized steel. The oven arrives completely assembled on heavy-duty shipping castors and ready to roll into place.

The combustion products of the gas and coal used to fuel the oven vent through a 12-inch O.D. flue collar located above the doorway. The Fire Deck 9690 can be connected directly to a power-ventilated grease rated duct, or it can be vented using a Listed Type 1 exhaust hood or one constructed in accordance with NFPA 96 and all relevant local and national codes. This model must be vented as a solid fuel appliance.



An ongoing program of product improvement may require us to change specifications without notice.
Revised July 2010

WOOD STONE CORPORATION
1801 W. Bakerview Rd.
Bellingham, WA 98226 USA

Toll Free (800) 988-8103
Tel (360) 650-1111
Fax (360) 650-1166

info@woodstone-corp.com or visit www.woodstone-corp.com

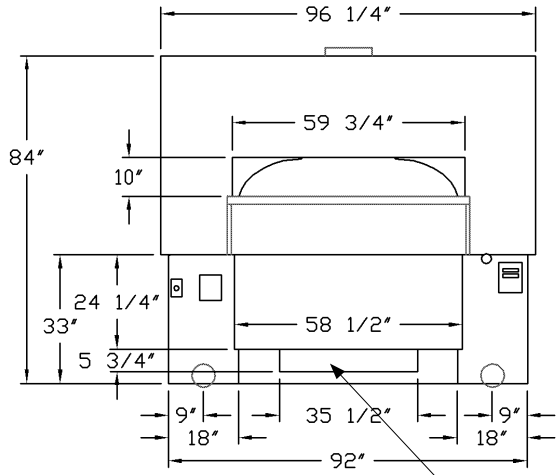


FIRE DECK 9690

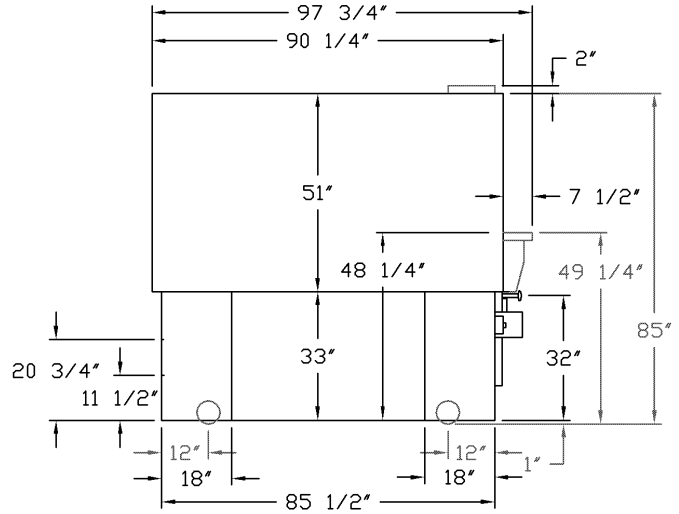
Stone Hearth Deck Oven

Model
WS-FD-9690

Front View



Side View



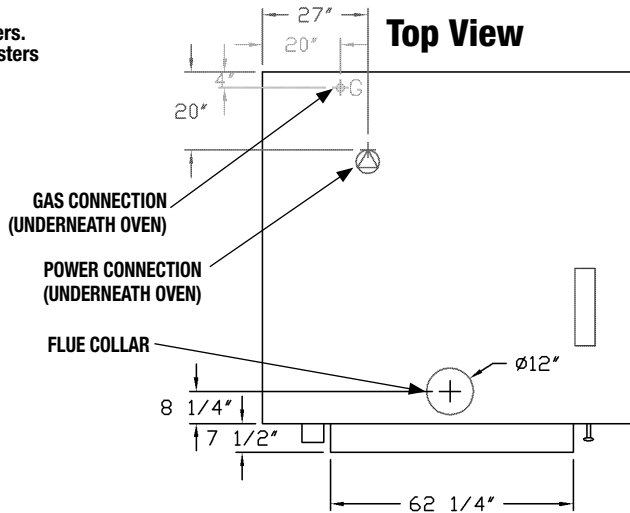
All storage boxes and/or access panels must remain easily removable after installation.

AIR INTAKE

Note: Oven is shipped with casters. Once the oven is in place the casters must be removed.

Note: Height with casters is 85"

Top View



UTILITIES REQUIRED

1. 120 VAC/ 4 AMP electrical connection
2. 347,000 BTU Natural Gas (NG) supply
OR
369,000 BTU Propane (LP) supply
The oven's gas inlet is 1" N.P.T. Female
3. Decorative Flame Burner adds 15,000 BTU's

VENTING INFORMATION

Listed for installation with a Wood Stone exhaust hood or a Type 1 hood constructed and installed in accordance with all applicable local and national codes; **OR** a power ventilated grease rated duct, connected directly to the 12-inch O.D. oven flue collar. See installation information for details.

IMPORTANT - This oven must be vented as a solid fuel appliance.

BTU output per burner

Natural Gas Propane

	Natural Gas	Propane
Radiant (flame) Burner	123,000	140,000
IR Burner	97,000	85,000
Decorative Flame	15,000	15,000

Unit Shipping Weight: 10,000 lbs.



An ongoing program of product improvement may require us to change specifications without notice.
Revised July 2010

WOOD STONE CORPORATION

1801 W. Bakerview Rd.
Bellingham, WA 98226 USA

Toll Free (800) 988-8103

Tel (360) 650-1111

Fax (360) 650-1166

info@woodstone-corp.com or visit www.woodstone-corp.com